



Bathing establishment Fact Sheet

Bathhouse name	NEDY
Address	VIA LUNGOMARE DI LEVANTE, 200
City	POVEROMO (MS)
Contacts	+39 0585 309429
Website	https://www.facebook.com/p/Bagno-Nedy-poveromo-toscana-italia-100054466060118/

TESTED BY: [Handy Social Promotion Association Surpassable](#) in summer 2023

Please note The following information refers to the verification date shown at the bottom of each card. **The Association** is not responsible for any significant changes made by the property after the visit.

Summary

Bathing establishment Fact Sheet	1
Arrival at the facility	2
Private/public parking.....	2
Pathway from the parking lot to the main entrance	2
Reception.....	3
Bar/restaurant	4
Internal pathways and common services	5
Internal pathways.....	5
Toilet and shower accessible to guests with reduced mobility	5
Changing room	7
Beach.....	7
Children's play area	8
Swimming pool	9
Doctors' Offices/Healthcare Facilities	10

Project carried out with the contribution of the





Arrival at the facility

Private/public parking

Presence of private parking	YES
Type of private car park	gravel
Presence of parking space reserved for people with disabilities	YES
Public parking nearby	YES with n. 1/2 places reserved for the disabled at approx. 50/100 meters
Type of public car park	asphalt
	

Pathway from the parking lot to the main entrance

Pathway from the car park to the entrance	From the public car park via connecting ramps from the road surface to the sidewalks. From the private car park, the establishment is accessed via slight differences in height with a slope < 6%
---	---





There are markers and tactile maps	NO
Usable door/entrance width	more than 90 cm
	

Reception

Umbrella booking system	<input type="checkbox"/> Via web <input checked="" type="checkbox"/> By phone <input checked="" type="checkbox"/> On-site
Presence of multilingual staff	YES
Presence of plant plan with key to services available	NO
Presence of visuo-tactile map	NO
Bulletin board/information panels at an average height of 130 cm in a well-lit area and font size at least 14 dpi with a contrast ratio greater than 4.5:1	NO
The staff attended training courses on welcoming people with different disabilities	NO





Bar/restaurant

Type of venue	Bar/restaurant
Access to the premises	Flat
Usable door/entrance width	more than 90 cm
Bar counter	more than 100 cm
Types of tables	legged
Space underneath the tables from the floor	more than 65 cm
Multilingual menu	NO
Menus with large print fonts	NO
Braille menu	NO
Table service for people with disabilities	YES
Availability of gluten-free food	<input checked="" type="checkbox"/> bread <input checked="" type="checkbox"/> pasta <input type="checkbox"/> biscuits <input checked="" type="checkbox"/> ice cream <input type="checkbox"/> Pre-packaged foods





Internal pathways and common services

Internal pathways



Indicate whether the pathways connecting the entrance to the beach are flat or with ramps in addition to those already described	Obstacle-free paths
--	---------------------

Toilet and shower accessible to guests with reduced mobility

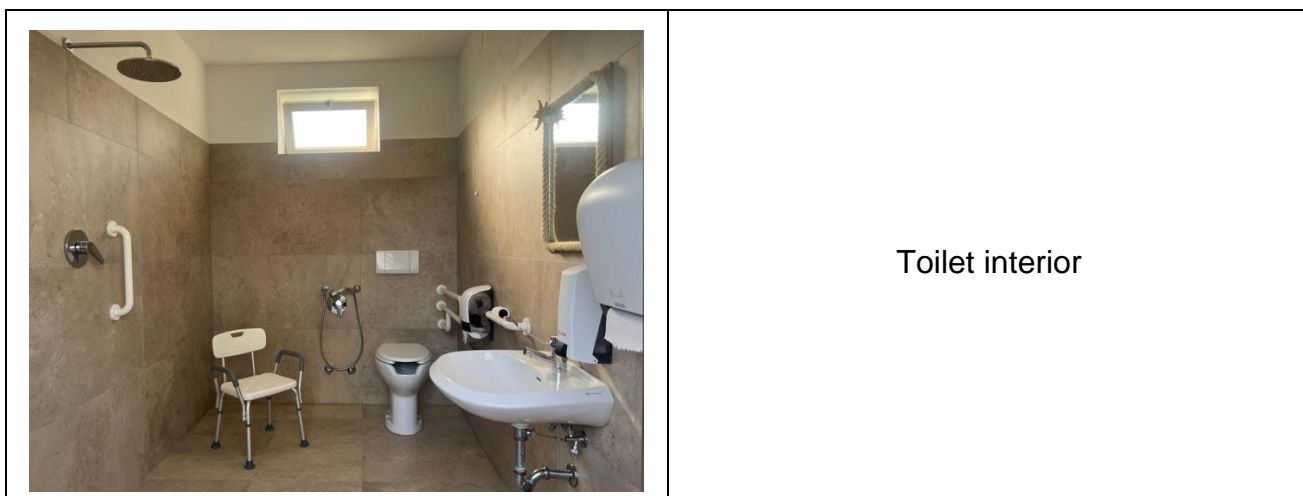
Number of toilets accessible/usable by guests with reduced mobility	1
Access to the premises	via ramp gradient < 8 %
Usable width of the entrance door	95 cm
Toilet height	51 cm
Open front toilet seat	YES
Support handles	to the left of the toilet





Flexible hand shower at the side of the toilet	YES
Free space on the sides of the toilet	left 27 cm right more than 90 cm frontal more than 90 cm
Electric doorbell/phone	YES
Washbasin with space underneath for wheelchair	70 cm
Height from the ground on the bottom edge of the mirror	Not sufficient for use by a person in a wheelchair, externally there is a usable mirror
Baby changing table	NO
	
Accessible shower available for guests with reduced mobility	YES in common with the toilet room
Shower type	open-type
Floor-level shower	YES
Shower chair	Convenient
Grab bar	YES
Presence of shower head or ups and downs	fixed shower head
Electric doorbell/phone	YES





Changing room

Accessible changing room available for guests with reduced mobility	NO
---	----

Beach

Type of beach	sand
Access to the beach	Flat
Walkway to reach the umbrellas	YES
Type of walkway	cement
Walkway width	100 cm





<p>Removable Platform between the walkway and the umbrella station to facilitate the passage and parking wheelchair</p>	<p>YES</p>
<p>Amphibious beach chair available for helping people with reduced mobility to enjoy swimming (owned by the establishment or by association)</p>	<p>YES</p>
	<p>Removable platform to reach the umbrella position</p>

Children's play area

<p>Children's play area</p>	<p>missing</p>
-----------------------------	----------------

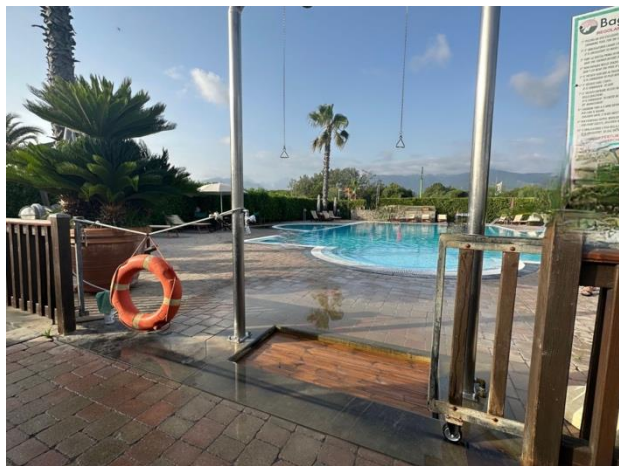
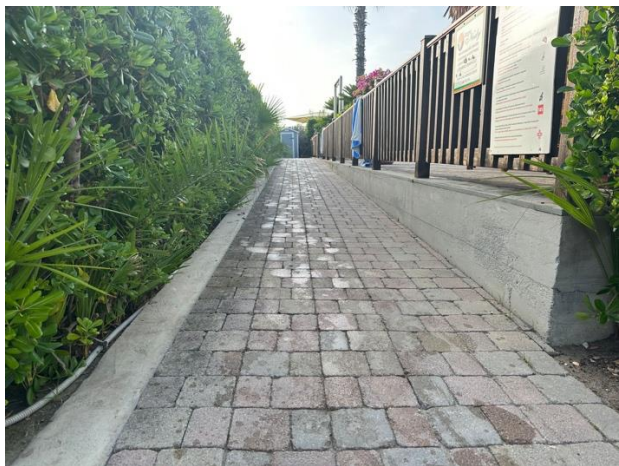
Project carried out with the contribution of the





Swimming pool

The property has a swimming pool	YES
Access to the swimming pool	via ramp length 15 m, width >90 cm, gradient 4 %
Useful width of the entrance gate	more than 90 cm
Access to the pool	via ramp with steps
Bathing aids for guests with reduced mobility	Not present



Project promoted by



Regione Toscana

Doctors' Offices/Healthcare Facilities

Hospitals near the facility	NOA NUOVO OSPEDALE APUANE Via Enrico Mattei, 2, 54100 Marina di Massa MS tel.: +39 0585 4931
Other Healthcare Facilities	Località Partaccia via delle Pinete 197/b Marina di Massa Tel.: +39 335 8001617

TESTED BY: Handy Superabile Social Promotion Association in summer 2023

Project carried out with the contribution of the



**Presidenza del
Consiglio dei Ministri**
Ministro per la disabilità